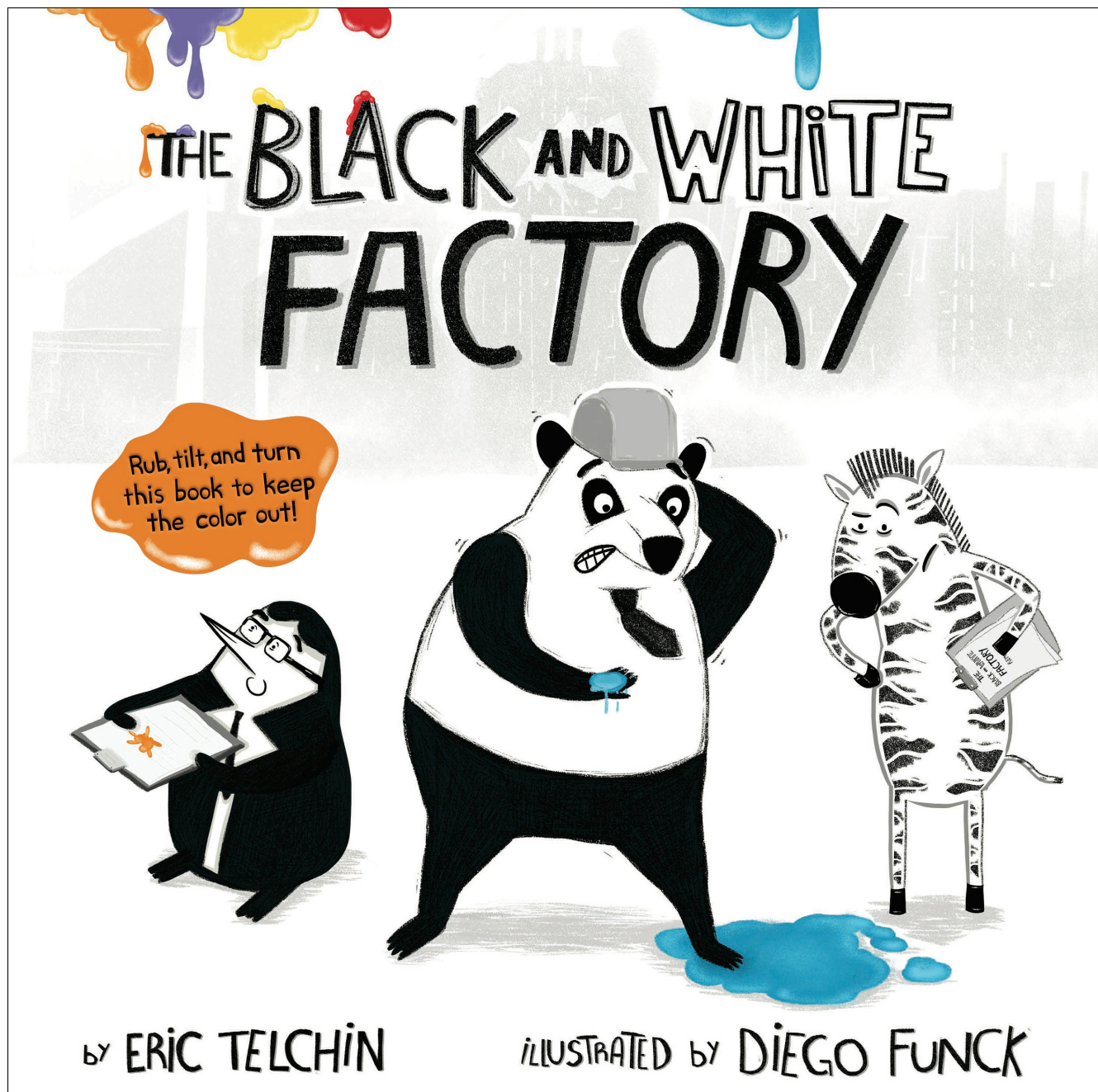


The Black and White Factory

Activity and Discussion Guide




little bee books
a division of Bonnier Publishing


Color Appreciation


In *The Black and White Factory*, Panda, Penguin, and Zebra learn to love color.


What are your favorite things in color?


Use the guide below to create a list of items that the same color as the one shown.


Things that are... 

Things that are... 

Things that are... 

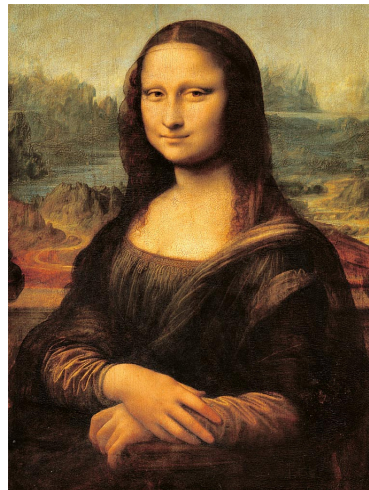
Things that are... 

Things that are... 

Things that are... 

Fine Art Memory

Cut out the cards below and use them to play memory.
Don't forget the black and white version is the match for the same painting in color!
Which do you like better? The black and white versions or color?



Color Your World

Draw a scene below of either a day at the beach, a garden, your classroom, a sports event, or your home.

First draw it in black and white, then draw it in color.



Which version do you like better and why?

Add color to the barcode room!

In *The Black and White Factory*, color first seeps onto a barcode.
Which color would you choose to add to the barcode room?



Who Made the Mess?

In *The Black and White Factory*, a huge colorful mess get made!
Draw in the culprits who created it!

